

# HYDROTEC

MANHOLE COVERS

**SYSTEM ECON*pur***

Rattle free and high traffic safety

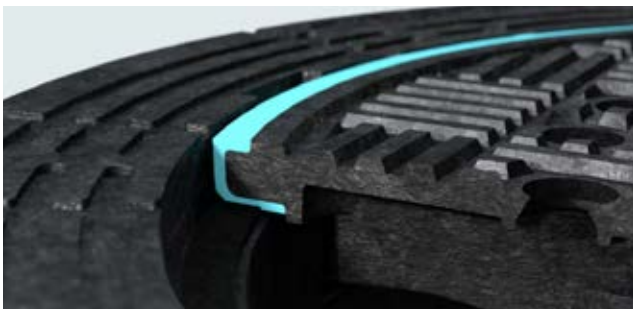


## SYSTEM ECONpur

### Product benefits

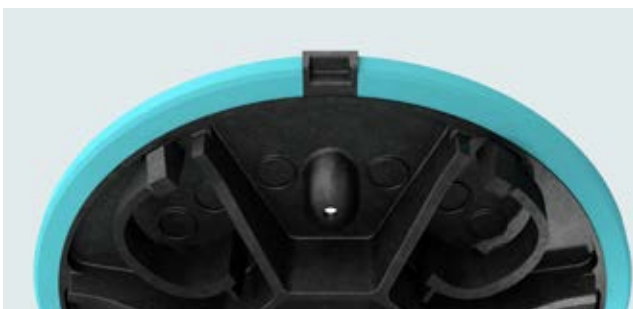
#### The system for all purposes

The system according to DIN EN 124 made of ductile cast iron is a good combination of high traffic safety and rattle-free operation.



#### Rattle free

ECONpur have a casted HYDROpur®-insert. This polyurethane coating is connected to the manhole cover by a special process, whereby two components merge to form an innovative product. The effect is enhanced by an additional damping insert in the frame.



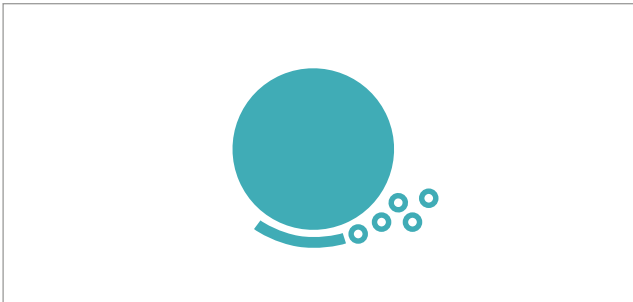
#### Minimum wear

The monolithic firmly bonded HYDROpur®-insert ensures a better balance of forces and less wear on the materials. Depending on the load, longer operating times are guaranteed with this feature.



## SYSTEM ECONpur

### Product benefits



#### Lower abrasion value

The HYDROpur<sup>®</sup>-insert has a more than 93 % lower abrasion value (test procedure according to DIN 53516) compared to an insert made of polychloroprene!



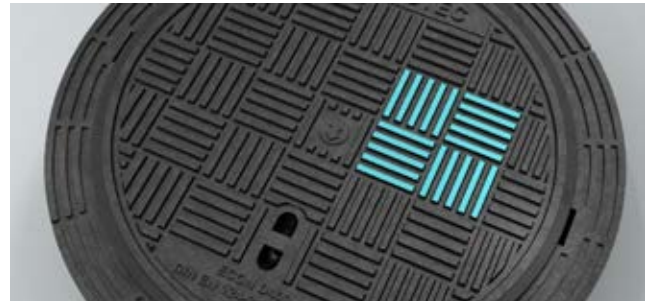
#### High traffic safety

The 3 point locking system ensures that the cover is securely positioned even under heavy loads and offers protection against theft and vandalism.



#### Hinge

The hinge provides maximum safety during 90° locking against accidental closing of the cover, as well as in the 110° inspection position.

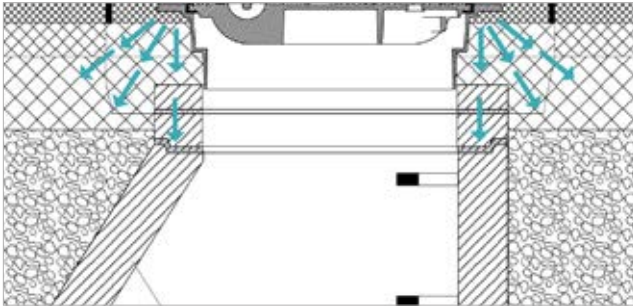


#### Design

Criss-Corss Design minimizes traffic roll-over noise and improves anti-slip.

## SYSTEM ECONpur SN

### Product benefits



#### Optimum load transfer

The self-levelling frame transfers the traffic load into layers, which reduces the load on the shaft of up to 80%.



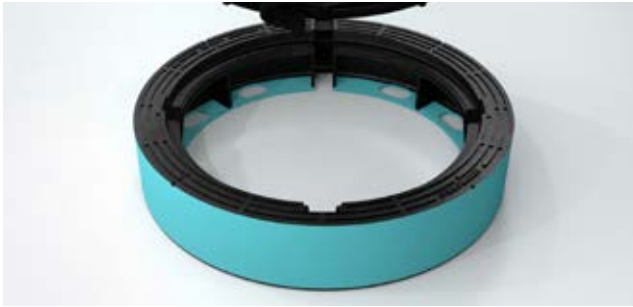
#### Roll-in frame

The frame is rolled into the bituminous pavement layer and supported by it.



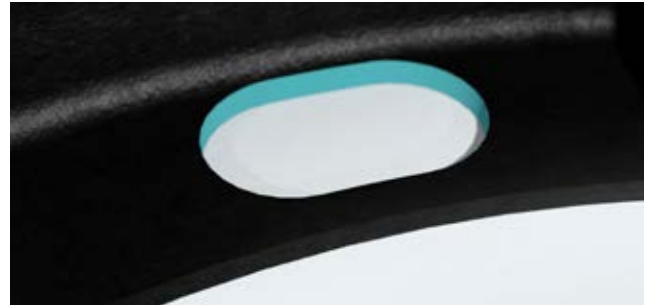
## SYSTEM ECONpur H

### Product benefits



#### Liftable frame and support flange

The smooth outer surface allows the frame to be easily lifted. The wide support flange ensures maximum stability.



#### Mortar pockets

Strong bolting between frame and shaft by the use of mortar-pockets.



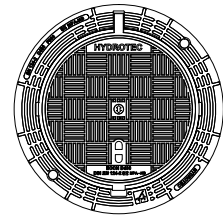
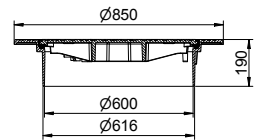


# SYSTEM ECONpur 600

## Class D 400 EN 124

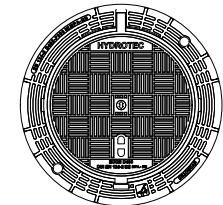
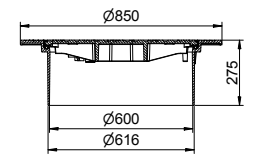
Type	Art. No.	Height (mm)	Pallet
------	----------	-------------	--------

Self-levelling frame	81494123	190	5
Self-levelling frame, ventholes	81494122	190	5



Type	Art. No.	Height (mm)	Pallet
------	----------	-------------	--------

Self-levelling frame	814941231	275	3
Self-levelling frame, ventholes	814941221	275	3

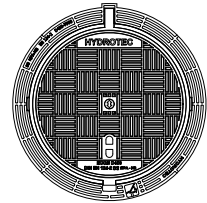
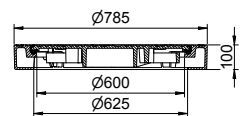


# SYSTEM ECONpur 600

## Class D 400 EN 124

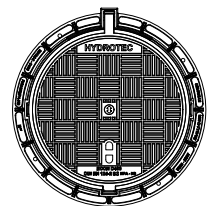
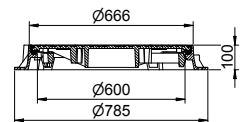
Type	Art. No.	Height (mm)	Pallet
------	----------	-------------	--------

Liftable frame	814941 <b>2004</b>	100	10
----------------	--------------------	-----	----



Type	Art. No.	Height (mm)	Pallet
------	----------	-------------	--------

	89494 <b>708</b>	100	9
Ventholes	89494 <b>718</b>	100	9



# SYSTEM ECONpur SN

## Accessories

Type	Art. No.	Height (mm)
Opening bar	989511	
ECONpur SN		
Installation frame universal	814392	
Installation frame	814197	190
Installation frame	814198	275



Opening bar



Installation frame universal



Installation frame 190



Installation frame 275






HYDROTEC Technologies AG  
Düngstruper Strasse 46  
27793 Wildeshausen  
Germany

 [office@hydrotec.com](mailto:office@hydrotec.com)

 +49 4431 9355-0

 [www.hydrotec.com](http://www.hydrotec.com)

 +49 4431 9355-99